



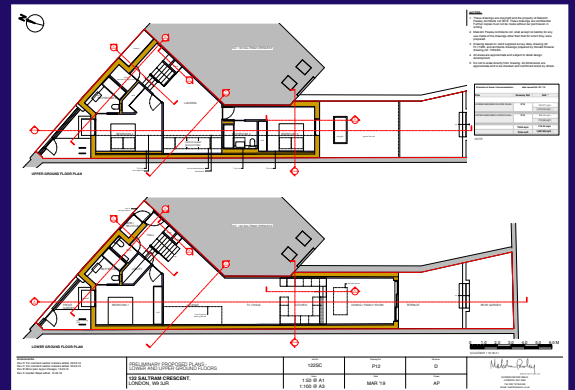
July 2019

Lornham Commence Construction On New Project

Work has started on a new house that Lornham are project managing in a joint venture in Queens Park. The land was acquired and Lornham successfully obtained planning permission to build a contemporary house in this sought after area just a few minutes walk from Queens Park tube station.

"We are excited to have started construction with a full team on site. The planners at Westminster Council were impressed by this innovative design and as such we look forward to delivering this project for our investors within the 9 month schedule"

Dominic Wertheimer, Lornham Director



Lornham has a strong track record in delivering residential projects in London for investors. Our bespoke service offers clients a turnkey solution for those looking to generate returns from London's real estate market.

For further information please contact Dominic Wertheimer:
dwertheimer@lornham.com

