



# Saltram Crescent, Maida Vale W9

Exceptional interior designed new build house

£1,695,000 | Freehold





*An exquisite 3 bedroom new build stucco fronted house offering sleek and spacious interiors that incorporate the latest in modern technology.*

*Developed by Lornham with award winning interior designer XBD Collective this contemporary house offers an abundance of features. The lateral layout offers generous entertaining space as well as 3 en-suite bedrooms.*

*There are an abundance of features with air conditioning, a spacious study area and Miele appliances in the spacious kitchen opening out onto a wonderful private garden.*

*Located on a quiet residential road the house is ideally positioned within a short walk of Queens Park underground station with the cafes and park within close proximity.*

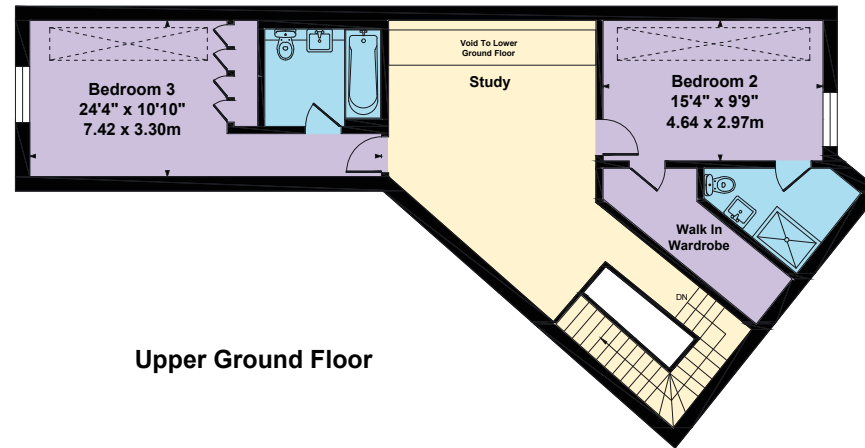
- 
- Air Conditioning
  - 3 En-Suite Bedrooms
  - 10 year NHBC guarantee
  - 58ft reception room opening onto south facing private garden



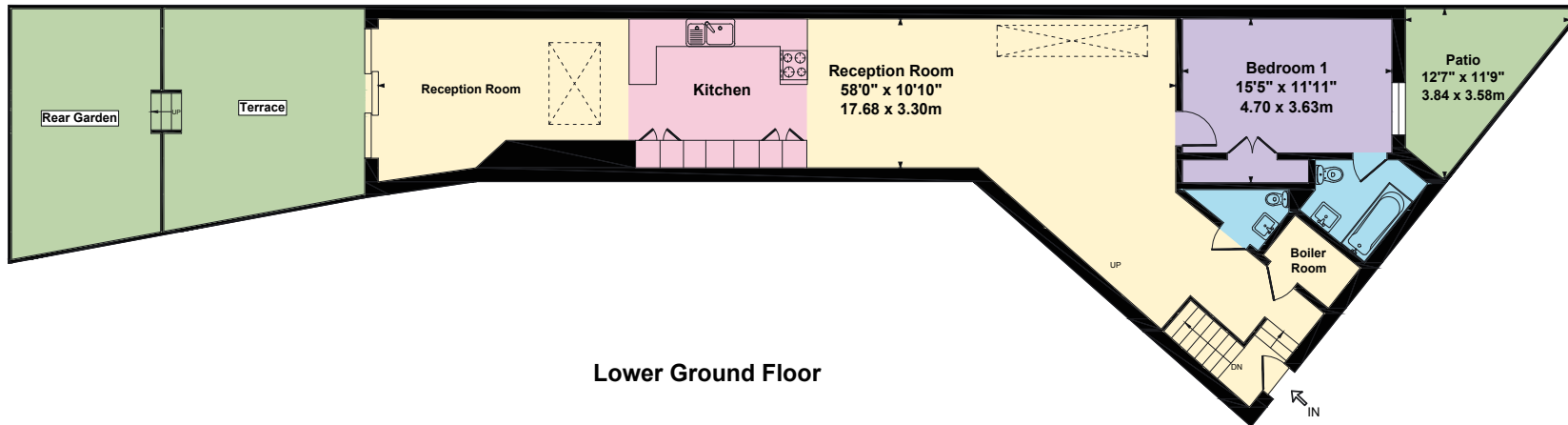




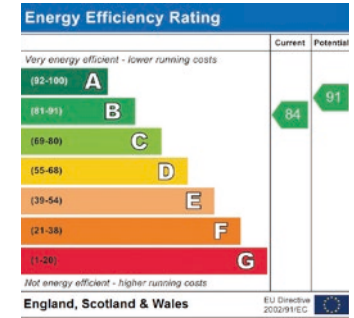
Approximate Gross Internal Area  
1,942 sq ft - 180 sq m



Upper Ground Floor



Lower Ground Floor



**Stuart Wigg**  
020 7289 8889  
stuart@braithwait.co.uk

44 Formosa Street  
London W9 2JP

